

TNJ COLORS

The New Jeweller Group

Design is an
Important
Element *in*
Jewellery

Natural Colour
Gemstone sector
Begins a
New Era!

46



70

14

Mineralien Hamburg

Facets

56

JMA Hong Kong 2016

16



Maha Al Sibai
International Jewellery Designer
& Global Jewellery Ambassador



GOLD SHEEN SAPPHIRE - AESTHETIC TO THE CORE

From the house of Genuine Gems and Jewellery Co., Ltd.

Tanzim Khan, of Genuine Gems and Jewellery Co., Ltd., discovered Gold Sheen Sapphire™ in an undisclosed area in Kenya in 2013. To date, there is not another mine in the world producing natural sapphire with this same special effect. Many people have tried to locate the mine in Kenya, but have failed to do so, leaving Khan as the only major supplier of gold sheen sapphire.

Mr. Khan's journey has been a long and often a lonely one. As soon as he saw the sapphire rough, he recognized the unique characteristics of the stone and set about trying to cut the rough to bring out the inner beauty. He is the first person to admit that a lot of mistakes they made along the way, but the end result has been extremely gratifying. Today Mr. Khan refers to finding the stone as "beyond belief" and the success of its reception beyond his wildest dreams. He managed to acquire the mine's entire production and states that he has enough rough material to provide cut stones for many years to come.

While the company is based in Bangkok, the decision to exhibit in Tucson in 2016 proved to be a good



Tanzim Khan

Director - Genuine Gems and
Jewellery Co., Ltd.

decision by Khan, as jewelry designers, gem enthusiasts, gemologists and geologists bought stones for jewelry making and as collector pieces.

"I haven't just sold gemstones here, I've made new friends," said Khan referring to the people he met at the JOGS Tucson Gem & Jewelry Show

where he exhibited for the first time. The characteristics of the gold sheen sapphire with its mix of other shimmering colors make the stones very appealing. In addition to the gold,



he stones exhibit blue, green, pink and sometimes gray colors, which Khan calls the "aurora effect."

Gem industry expert Cap Beesley of ARD Analytics Inc. in New York, who was one of the first to analyze gold sheen sapphire, described the stone as, "a unique bronze colored sapphire that exhibits a shimmering gold effect juxtaposed against a chocolate brown backdrop." Beesley, quite taken by the characteristics of the stone, described it as: "This new material with its unique sheen, color and geometric patterns offer lots of creative options for designers, jewelers and manufacturers at a very reasonable price." Khan, who understood the need for transparency about gold sheen sapphire, provides printed copies of the reports by Beesley and other experts to buyers in order to ensure that they understand their purchase and so they are able to pass along information to their clients on this unique gemstone.

Geologist Veronica Poteat saw gold sheen sapphire for the first time in Tucson and bought stones representing all the varieties and colors available. In addition to becoming an instant fan of the gemstone, Poteat said that she was impressed with Khan's sincerity and willingness to share his passion for the stone as well as his determination to bringing the stone to the market.

"I was very impressed with Tanzim's enthusiasm about gold sheen sapphire. He is genuinely thrilled and too, appreciate about the beauty," said Poteat. The Gemological Testing Laboratory (GIT) in Bangkok described the stone as having a "unique Golden Sheen effect created by the reflection of light from microscopic natural inclusions within the stone." The AIGS Lab in Bangkok and Tokyo Gem Lab also used the term "Golden Sheen" in their laboratory reports on stones submitted to them for testing by Khan.

Richard Hughes of Lotus Gemology, based in Bangkok, described the stone in his report as having, "a golden sheen and beautifully abstract patterns." Working with the material cutters have produced fancy-cut stones of all sizes, up to and over 100 carats are available. Most of these large stones have been reserved in advance by high-end jewelry brands. Genuine Gems and Jewellery Co., Ltd also exhibits at the Bangkok Gems & Jewelry Fair and the Hong Kong Jewellery & Gem Fair.

By Barbara Wheat

Tanzim Khan can be reached at: genuinegems07@gmail.com.



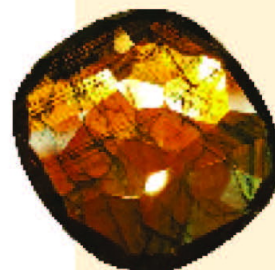
Pear shape gold sheen sapphire with blue tones, 64.59 carats



Fancy cut gold sheen sapphire



Gold sheen sapphire 91.35 cts



Gold sheen sapphire of 32.55 carats